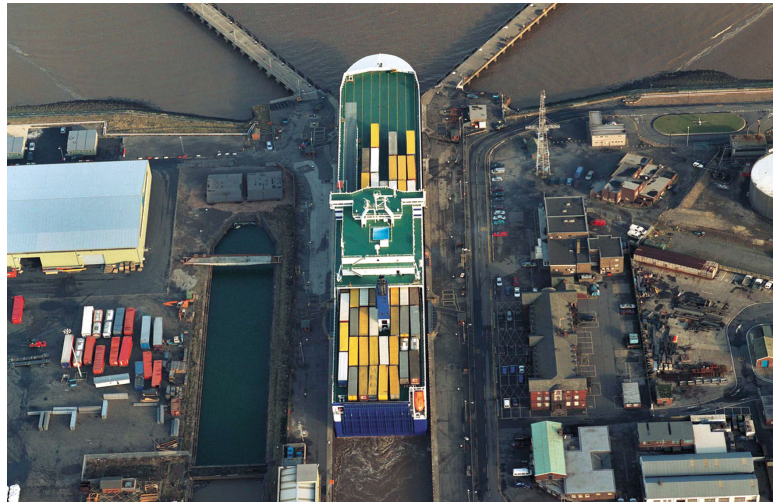


## Port Consultancy Services

### About

ABP Marine Environmental Research Ltd (ABPmer) is a leading provider of specialist services to the ports sector that enjoys a unique position as a result of our technical capabilities, experience and the nature of our parent company which owns and operates 21 UK ports.

As a subsidiary of Associated British Ports (ABP), the UK's largest ports group, ABPmer has nearly 60 years port related research and consultancy practice and understands that the successful design and operation of ports, harbours and marinas is dependent on understanding both the marine environment and operational requirements.



In addition to providing hydraulic design and environmental services to ABP and other national infrastructure providers, ABPmer provides specialist consultancy and research support to government departments, consulting engineers and other ports authorities and operators in the UK and overseas.



### Port Conservancy Services

Data Collection & Analysis

Environmental Impact Assessment

Environmental Management Planning

Environmental Sensitivity Analysis

GIS Environmental Mapping

Hydrographic Surveys and Investigations

Management of Shoreline and Estuarial Change

Oceanography/Meteorology/Coastal Hydraulics

Numerical Model Studies

### Port Marine Operations

Capital/Maintenance Dredging & Disposal Assessment

Contingency Planning

Marine Access – Channels & Waterways

Marine Risk Analysis

Marine Traffic Planning

Port Safety Assessment

Ship Manoeuvring, Berthing & Mooring

Vessel Traffic Management/Aids to Navigation



### Further Information

Please phone Claire Brown, ABPmer : 02380 711840



ABP Marine Environmental Research Ltd  
Suite B, Waterside House

Town Quay, Southampton SO14 2AQ

Tel: +44 (0) 23 8071 1840 Email: enquiries@abpmer.co.uk  
Fax: +44 (0) 23 8071 1841 Website: www.abpmer.co.uk