

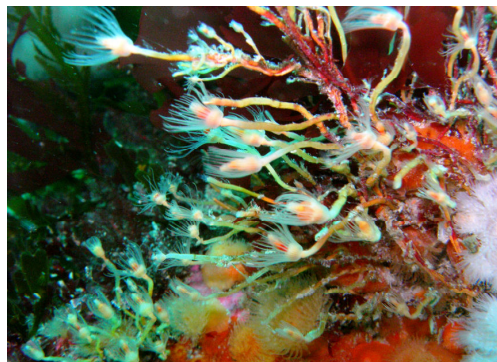
## Planning and Policy Services

### About

Our seas and coasts are a rich resource. They support an exceptional diversity of marine life and generate substantial revenue through exploitation of ecosystem goods and services.

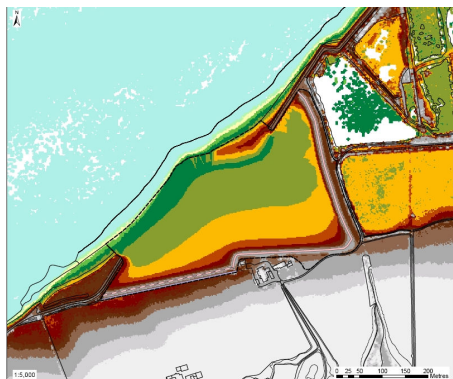
Achieving sustainable development in the marine environment requires a balance to be achieved between resource use and protection of our seas. If we get it right both can win.

As a leading consultancy we work with the full range of stakeholders to create sustainable solutions for the marine environment.



### Supporting Conservation

ABPmer provides a range of conservation advice to industries operating in the marine environment. We also have particular skills in developing practical options for mitigation under the EIA Directive and/or compensation requirements under the Habitats and Birds Directives.



We are practiced in helping to secure agreements with stakeholders for the development of legally-agreeable mitigation and monitoring programmes. Such work includes selecting, designing and assessing the impacts of newly created coastal habitat as a compensation requirement.

#### Key Services:

- Advice on conservation requirements & mitigation measures
- Advice on marine habitat management
- Coastal and marine habitat creation and enhancement
- Conservation research
- Habitats Regulations appraisals
- Marine habitat and species survey and monitoring

### Marine Licensing

Marine licensing requirements both at the coast and offshore can be complex and increasingly have to take account of the requirements of European Directives such as the EIA Directive, Habitats and Birds Directive and the Water Framework Directive.

ABPmer provides a wide range of advice and support to marine developers in obtaining marine licences and consents. We also provide advice to policy makers, regulatory bodies and industry on improvements to marine licensing arrangements.

#### Key Services:

- Advice on licensing requirements
- Appropriate Assessment
- Environmental Impact Assessment (EIA)
- Marine environmental survey and monitoring
- Mitigation & compensation package negotiation
- Strategic Environmental Assessment (SEA)
- Support on licensing applications



### Further Information

Please phone Natalie Frost, Head of Environment Team ABPmer : 02380 711840



ABP Marine Environmental Research Ltd  
Suite B, Waterside House

Town Quay, Southampton SO14 2AQ  
Tel: +44 (0) 23 8071 1840 Email: enquiries@abpmer.co.uk  
Fax: +44 (0) 23 8071 1841 Website: www.abpmer.co.uk

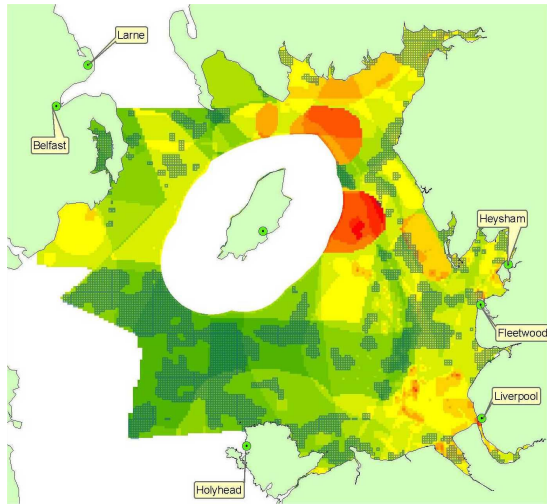
## Marine Environmental Services

### Marine Planning

Competition for space between different human activities in the marine area and greater scientific understanding of the impacts on marine ecosystem health are forcing marine managers to develop more sustainable solutions for the management of our seas.

Marine planning as part of an overall system of marine management is a cornerstone of the UK and devolved governments' Marine Acts.

ABPmer is a leading authority on marine planning. We have expertise both in strategic broad scale planning and in detailed planning for new development activities, for example, linked to feasibility studies.



We routinely use national spatial data layers to support screening exercises and constraints mapping.

#### Key Services:

- Constraints mapping
- Data analysis and review
- Facilitation and stakeholder engagement
- Feasibility studies
- Plan review
- Socio-economic assessments
- Support to plan preparation
- Sustainability appraisal

Figure showing intensity of use per planning unit for Irish Sea Planning Pilot Project, Defra (2004)

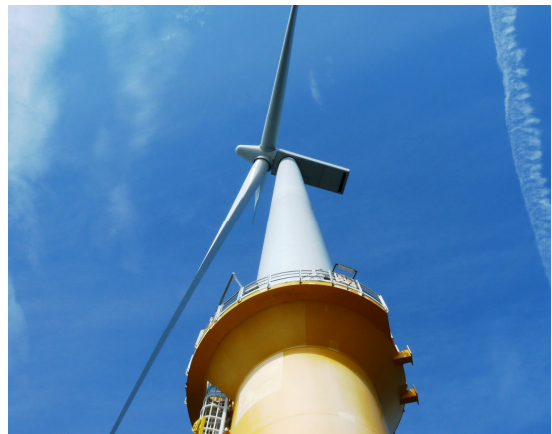
### Socio-economic impact assessment

ABPmer Sustainable marine development requires the integration of social, economic and environmental factors. The importance of socio-economics in marine decision-making is increasingly being recognised leading to improvements in the quality and availability of socio-economic data. This is leading to the development of new tools and methodologies for integrated decision-making.

ABPmer undertakes assessments of socio-economic impacts to support Impact Assessments and Sustainability Appraisals. We also undertake leading-edge research to support the development of integrated decision-making methodologies.

#### Key Services:

- Cost benefit analysis
- Data analysis and review
- Ecosystem services assessment
- Impact assessment
- Socio-economic assessments
- Sustainability Appraisal



### Further Information

Please phone Natalie Frost, Head of Environment Team ABPmer : 02380 711840

