

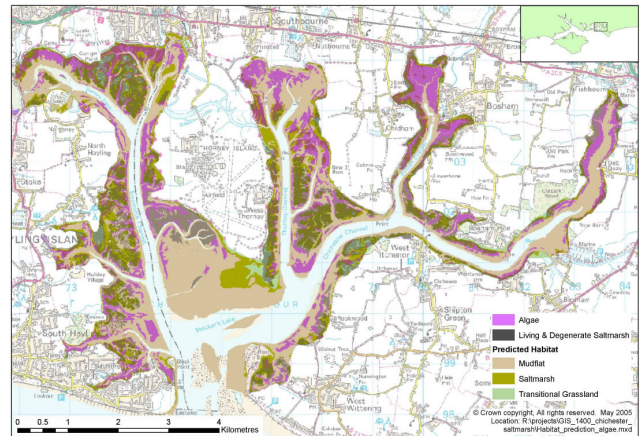
## Data Management Services

### About

ABPmer offers a wide range of Data Management services ranging from data capture to the development of tailor-made GIS software solutions and databases. Projects within the marine environment often pose unique challenges, ABPmer's dedicated Data Team have developed a series of tools and techniques that resolve complex data analysis and information presentation issues

We use structured cataloguing systems and high-end spatial database technology for the management of datasets, whilst our broad range of industry software is used for the management and presentation of data to provide tailor-made client solutions.

We also have industry leading internet mapping software which has been developed to provide a data and information map portal.



### Areas of Application

ABPmer has a detailed understanding of spatial analysis techniques and provides tools for:

- Bespoke data management solutions
- Channel migration analysis
- Constraint mapping
- Data management
- Decision-making
- Deployment optimisation
- Intertidal habitat prediction
- Marine Spatial Planning
- Planning optimum service routes
- Programming
- Resource quantification
- Seabed and system evolution
- Site selection
- Vertical datum correction
- Visualisations
- Volumetric analysis
- WebGIS & dissemination
- Website development

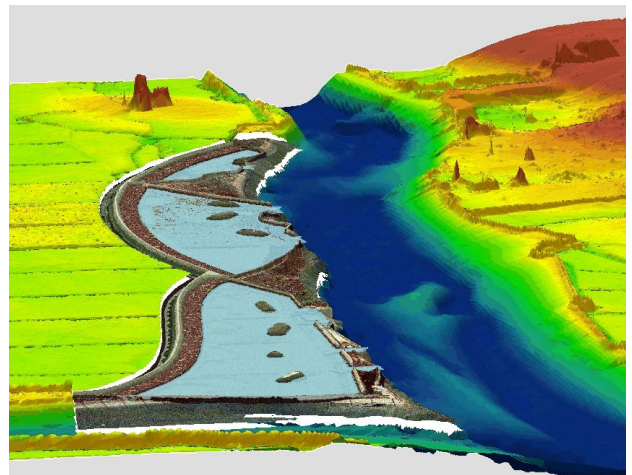
### Specialist Services

**Groundbreaking 3D Visualisations** can be produced for the analysis and dissemination of information to a wide audience. Visualisations can also incorporate outputs from other ABPmer areas of expertise including: Coastal Processes, Numerical Modelling and Environmental Analysis.

**Customised GIS Development** ranges from the programming of individual analysis tools to the complex integration of GIS with numerical modelling and database applications.

**Animations** can convey fairly complex scientific detail, or explain ecological processes, in an engaging and accessible way.

**WebGIS and Dissemination** ABPmer staff are able to address a wide range of contemporary issues including dissemination of data and metadata, presentation of project deliverables and development of real-time GIS for the rapid display and analysis of spatial information.



### Further Information

Please phone Claire Brown, ABPmer : 02380 711840

