

Coastal Management Services



About

Many coastal areas are under significant development and environmental pressures and face major challenges as a result of climate change.

These pressures mean that coastal and estuarine communities have to take account of long-term sustainability considerations when making management decisions.

ABPmer's dedicated team of physical processes specialists (scientists, geomorphologists and engineers) are at the forefront of understanding how the coast might respond to changing needs and pressures.

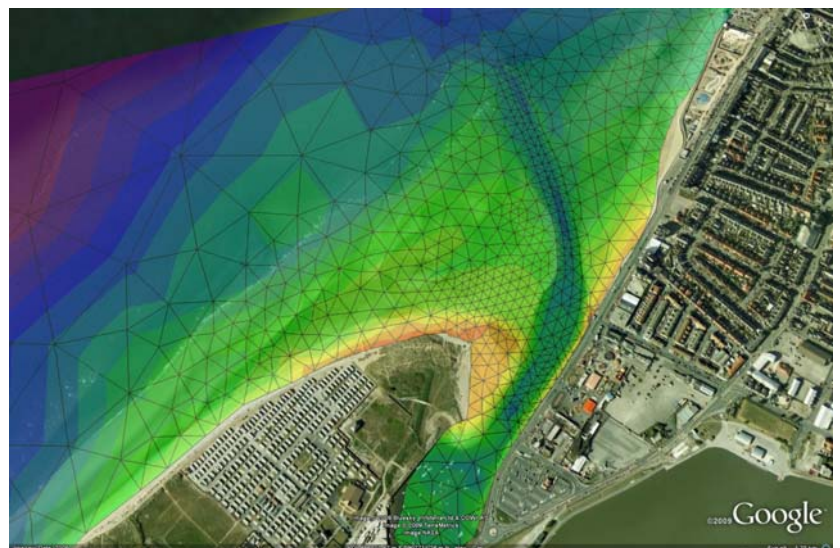
We provide services to a wide range of interests including landowners, port and harbour authorities, the energy and dredging sectors and private developers.

We are also key providers to the flood and coastal erosion risk management industry delivering a wide variety of investigations and assessments in support of national strategies, regional assessments, local risk mapping as well as numerical modelling assessments of flood defence schemes for local authorities, the Environment Agency and other consultancy companies.

Our Services

ABPmer offers a tailor-made service to all clients based upon a multi-disciplinary approach. The Coastal Processes team, supported by ABPmer's Data, Environment and Modelling teams, provides services with specific relevance to:

- Beach processes and behaviour;
- Coastal / estuarine process studies;
- EIA and Appropriate Assessment;
- Flood and coastal erosion risk management;
- Managed realignment and habitat creation;
- Coastal erosion mapping and investigations;
- Climate change adaptation studies;
- Offshore development;
- Research and development.



Rhyl Overtopping Study

Further Information

Please phone Tracey Hewett, Sales and Marketing Manager, ABPmer : 02380 711844



ABP Marine Environmental Research Ltd

Suite B, Waterside House

Town Quay, Southampton SO14 2AQ

Tel: +44 (0) 23 8071 1840

Email: enquiries@abpmer.co.uk

Fax: +44 (0) 23 8071 1841

Website: www.abpmer.co.uk

Coastal Management Services

Our Key Areas

Managing the risk posed by **coastal flooding or erosion** both now and in the future requires the application of sound science throughout a development's lifecycle.

ABPmer has considerable experience in supporting flood risk management through a combination of strategic coastal process investigations coupled with local hydrodynamic, sediment transport, wave and tidal modelling, EIA, appropriate assessments and consenting.

To support our investigations we maintain and develop a wide range of sophisticated 1D, 2D and 3D modelling software to ensure clients are benefiting from the latest technologies and research initiatives.



Horsea Sands Sea Defence



Happisburgh 2009 copyright Jim Whiteside www.happisburgh.org.uk

We are market leaders in **managed realignment and habitat creation** having undertaken numerous schemes from inception through to post scheme monitoring for over a decade.

High profile example projects include the Defra Wallasea managed realignment site and the adjacent RSPB Wildcoast project in Essex along with the Environment Agency's Medmerry managed realignment on the south coast of England.

ABPmer recognises that it is vital for coastal managers and other specialists to be informed about the lessons learned from completed schemes. We therefore manage an online interactive database of tidal exchange and managed realignment schemes in North West Europe. (www.abpmer.net/omreg)

Coastal change and climate change adaptation is an increasing area of concern for coastal managers.

ABPmer has considerable experience in modelling and mapping changing coastlines in response to different climate change scenarios.

This, coupled with our knowledge and experience of policy, planning and coastal management, means we are in a prime position to support coastal communities and landowners in the sustainable management of their coastal zones.



Wallasea Island, Wild Coast Visualisation

Further Information

Please phone Tracey Hewett, Sales and Marketing Manager, ABPmer : 02380 711844



ABP Marine Environmental Research Ltd
Suite B, Waterside House
Town Quay, Southampton SO14 2AQ
Tel: +44 (0) 23 8071 1840 Email: enquiries@abpmer.co.uk
Fax: +44 (0) 23 8071 1841 Website: www.abpmer.co.uk