

Cable and Pipeline Services

About

To make informed route selection decisions, pipeline and cable planners and managers need information on: the state of the seabed and related sediment mobility; the constraints due to natural and anthropogenic features and the regulatory framework within which marine consents are granted.

ABPmer provides a complete package of support to route planners to satisfy both statutory consenting requirements and the lifetime management of the asset.

With 60 years of experience, we deliver a tailor-made service to our clients based upon a multidisciplinary approach and advocate a system-based approach to the natural environment encompassing physical, biological and chemical processes, alongside development aspirations and management responsibilities.

Our integrated capabilities allow us to offer a range of services which support projects at all stages in their lifecycle, starting from initial data collection and analysis through to data management, interpretation and final reporting.

Cable Routing

Projects within the marine environment often pose unique challenges; ABPmer's dedicated team of GIS professionals have developed a series of tools and techniques that resolve complex data analysis and information presentation issues.

ABPmer's dedicated GIS and Data Team expertise includes customisation, development, data acquisition, metadata management, advanced spatial analysis and information presentation. We provide tools for channel migration analysis, constraint mapping, marine spatial planning, optimum service routing, seabed and system evolution.



Marine Consents

Regulation of marine infrastructure development projects is administered by a wide range of different bodies. Understanding the permissions that are required to enable development and activities to take place is complicated with the fact that the necessary information is distributed between many different consenting authorities.

The wide range of organisations with responsibilities and vested interests in marine related projects, adds to the difficulty in meeting the statutory requirements and addressing all the issues raised during the consultation process, which need to be taken into consideration to support decisions made about the future use or development of an area.

ABPmer has significant experience in both advising and negotiating the management of these issues during the decision-making process for both regulators and developers alike. Through the experience gained in these wide-ranging studies, ABPmer enjoys long established relationships with all consenting bodies with an interest in the marine environment.

Pipeline image courtesy www.landandmarine.com

Further Information

Please phone Alison Houghton, ABPmer : 02380 711840



ABP Marine Environmental Research Ltd
Suite B, Waterside House
Town Quay, Southampton SO14 2AQ
Tel: +44 (0) 23 8071 1840 Email: enquiries@abpmer.co.uk
Fax: +44 (0) 23 8071 1841 Website: www.abpmer.co.uk

Cable and Pipeline Services

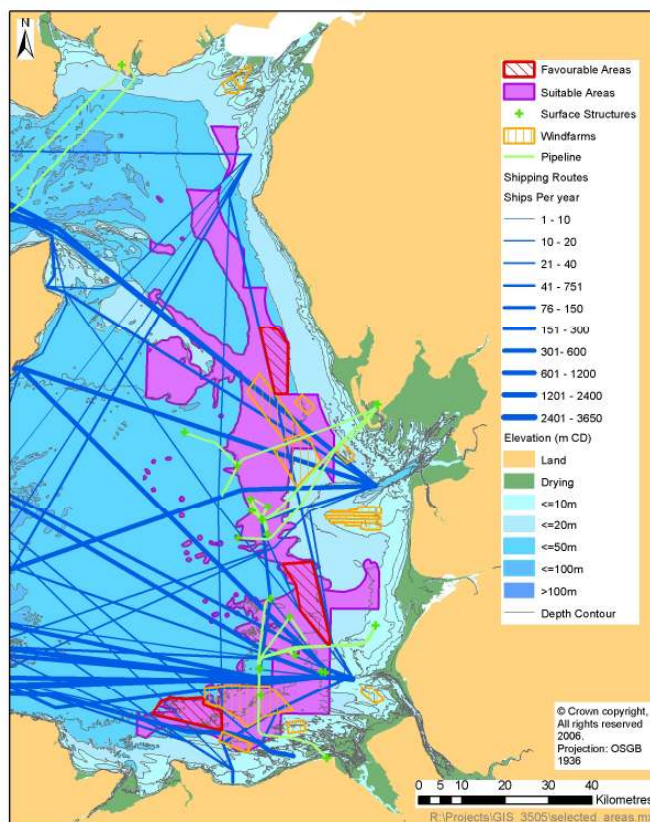
Environmental Statements

ABPmer regularly undertakes environmental statements and appropriate assessments for the marine sector and our expertise has supported a variety of industry sectors in acquiring marine consents and associated licences to successfully realise a development. These have invariably involved providing advice on possible environmental mitigation and monitoring packages that have been required to support these applications.

Advice and Mitigation

The experts in ABPmer's Environment Team understand that projects need to have a comprehensive understanding of the baseline environment and particularly, of the linkages between the existing physical processes and ecological characteristics. Predictions of development-related physical changes then need to be integrated into an understanding of future short-term and long-term ecological responses.

In addition to our experience in providing environmental and ecological advice to support various assessments across a range of sectors, ABPmer can advise on practical mitigation options should the project have such a requirement and draw up monitoring programmes to secure legal agreement between all stakeholders



GIS Constraint Mapping

Selected Experience

Cumbria Coast Grid Connection (ongoing), SLR Consulting on behalf of National Grid

ABPmer is currently undertaking route constraints mapping and environmental appraisal aspects for a subsea option associated with the above project. Upgrade of the electricity grid in the region is required to accommodate links from new power stations and windfarms.

Gas Pipeline Route (ongoing), Confidential

ABPmer has been commissioned to undertake a pre-feasibility study to develop a baseline understanding of the environment in which an offshore gas pipeline could be constructed, and identify possible route corridors and landfall sites for the transportation of gas between mainland UK to offshore natural gas fields in the central and southern North Sea.

Shetland HVDC link – Coastal Impact Assessment (2008), SSE

ABPmer was commissioned by Entec on behalf of Scottish and Southern Energy to evaluate a proposed Shetland HVDC cable route and landfall in the Spey Bay area of the Moray Firth.

The study comprised a desk based assessment of baseline coastal, hydrodynamic and sedimentary processes, and seabed mobility. The work allowed us to address particular concerns that Scottish Natural Heritage held in relation to the potential impacts of installing the cable landfall on the beach, adjacent hinterland and features of the SSSI at the site.

Additional concerns that the cables might sustain damage as a result of nearshore sediment mobility and coastal erosion were addressed by means of a high level assessment of seabed mobility along the proposed cable route. The project also provided guidance on the most appropriate method of cable installation and the preferred location for land based infrastructure.

Further Information

Please phone Alison Houghton, ABPmer : 02380 711840

