

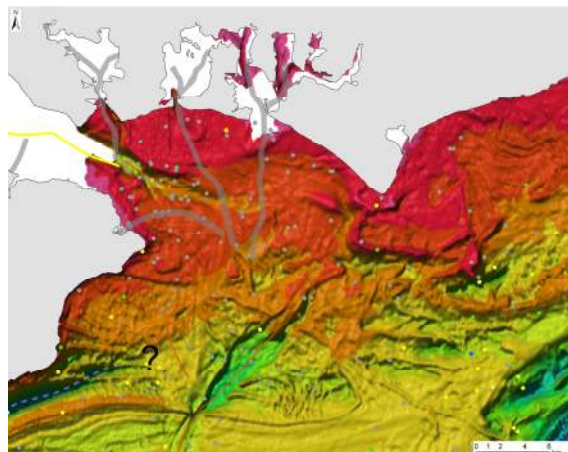
Maritime Archaeology and Submerged Cultural Heritage

About

Archaeology associated with anthropogenic activities in the marine environment, including the current sub-tidal, intertidal and coastal zones has the potential to date from 700,000 years BP

The historic environment record of the UK Continental Shelf (UKCS) includes evidence of drowned landscapes, submerged archaeological occupation sites and artefacts, shipwrecks and aircraft losses.

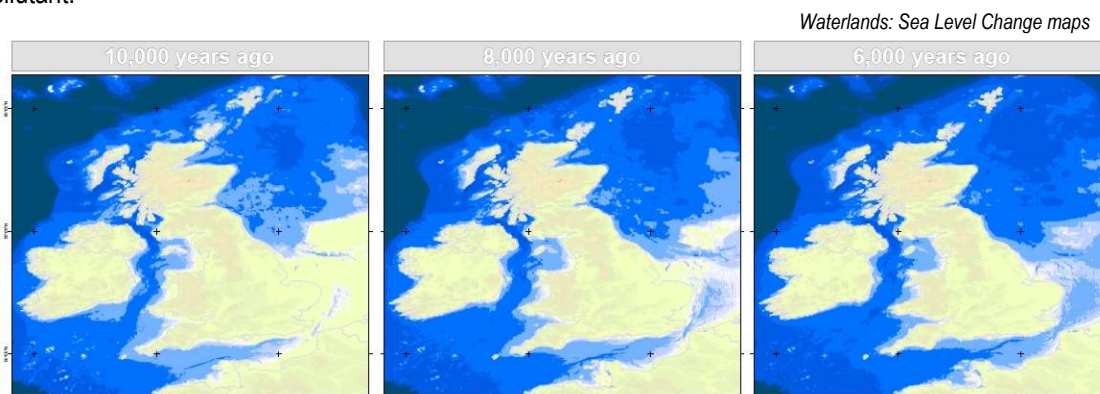
Appreciation of the extent and significance of this resource is growing and is the concern of statutory authorities, other managers and marine developers.



Strategic Studies

Projects within the marine environment often pose unique challenges; we provide nation-wide solutions to marine heritage management issues such as assessing the risks posed by shipwreck and aircraft pollution, and developing and monitoring indicators for assessing change and the fragility of the marine heritage resource.

High profile examples include 'Waterlands: Developing Management Indicators for Submerged Palaeo-environmental Landscapes' project, funded by the Marine Aggregates Levy Sustainability Fund which used GIS to develop a suite of management indicators & suggested framework for submerged palaeo-landscapes in the UK and the 'UK Potentially Polluting Wrecks Database' that developed a database and an algorithm to classify each vessel as a high, medium, or low level risk potential pollutant.



Marine Heritage Economic Evaluation

ABPmer has proven expertise in evaluating the economic value of marine heritage assets and the marine heritage industry. Most recently we have undertaken an economic valuation of Scotland's maritime cultural heritage as part of their Marine Atlas.

Data Management and Archiving

ABPmer's Maritime Archaeology specialists and dedicated GIS and Data Team are experienced in working with digital heritage data held within marine environment or in bespoke asset databases. We can also provide tools for sea level change mapping, heritage constraint mapping, visualisations.

Impact Assessments

We regularly undertake environmental statements and appropriate assessments for the marine sector and our expertise has supported a variety of industry sectors in acquiring marine consents and associated licences to successfully realise a development. These have invariably involved providing advice on the potential impacts to marine archaeology and recommending mitigation and monitoring packages that have been required to support these applications.

Further Information

Please phone Nikki Goodwyn, ABPmer : 02380 711840 E:ngoodwyn@abpmer.co.uk

